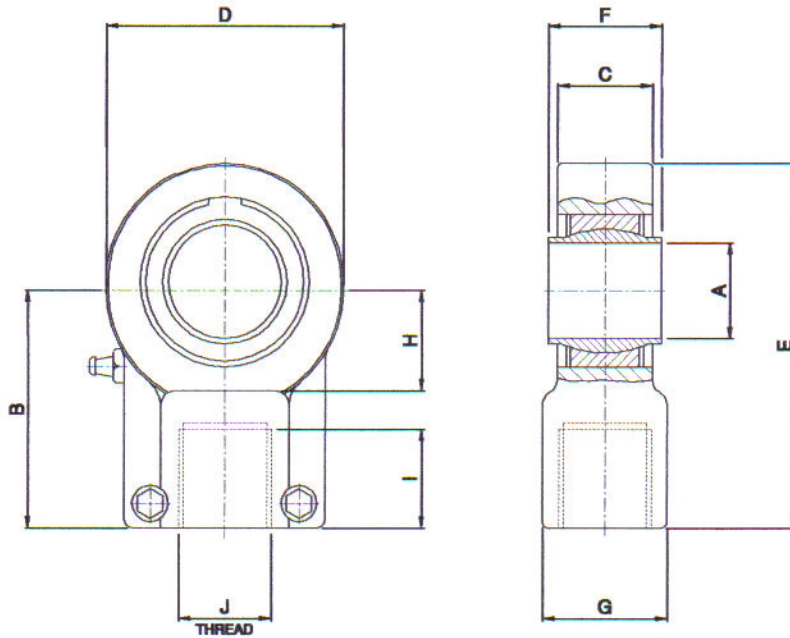


# AP70

## STANDARD MOUNTING. STYLE 6

### DIMENSIONS

THREADED END  
DIN 24333/6  
ISO 6022



CODE	A	B	C	D	E	F	G	H	I	J THREAD	STATIC LOAD KN	DYNAMIC LOAD KN
6/12	12	38	10.5	32	54	12	16	14	17	M12x1.25	24	10
6/16	16	44	13	40	64	16	21	18	19	M14x1.5	36	17
6/20	20	52	17	47	77	20	25	22	23	M16x1.5	48	30
6/25	25	65	21	58	96	25	30	27	29	M20x1.5	78	48
6/32	32	80	27	70	119	32	38	32	37	M27x2	114	67
6/40	40	97	32	89	146	40	47	41	46	M33x2	204	100
6/50	50	120	40	108	180	50	58	50	57	M42x2	310	156
6/63	63	140	52	132	212	63	70	62	64	M48x2	430	255
6/70	70	160	57	155	245	70	80	70	76	M56x2	540	315
6/80	80	180	66	168	271	80	90	78	86	M64x3	695	400
6/90	90	195	72	185	296	90	100	85	91	M72x3	750	490
6/100	100	210	84	210	323	100	110	96	96	M80x3	1060	610
6/110	110	235	88	235	364	110	125	105	101	M90x3	1200	655
6/125	125	260	103	264	406	125	135	120	101	M100x3	1430	950
6/160	160	310	130	326	488	160	185	150	126	M125x4	2200	1370
6/200	200	390	162	418	621	200	215	195	161	M160x4	3650	2120

All dimensions in mm unless otherwise stated

APEX HYDRAULICS LTD.  
LOCK WAY, RAVENSTHORPE INDUSTRIAL ESTATE, DEWSBURY, WEST YORKSHIRE, WF13 3SX  
TEL:-01924 493063 FAX:- 01924 480386 E-MAIL:- sales@apexhydraulics.co.uk