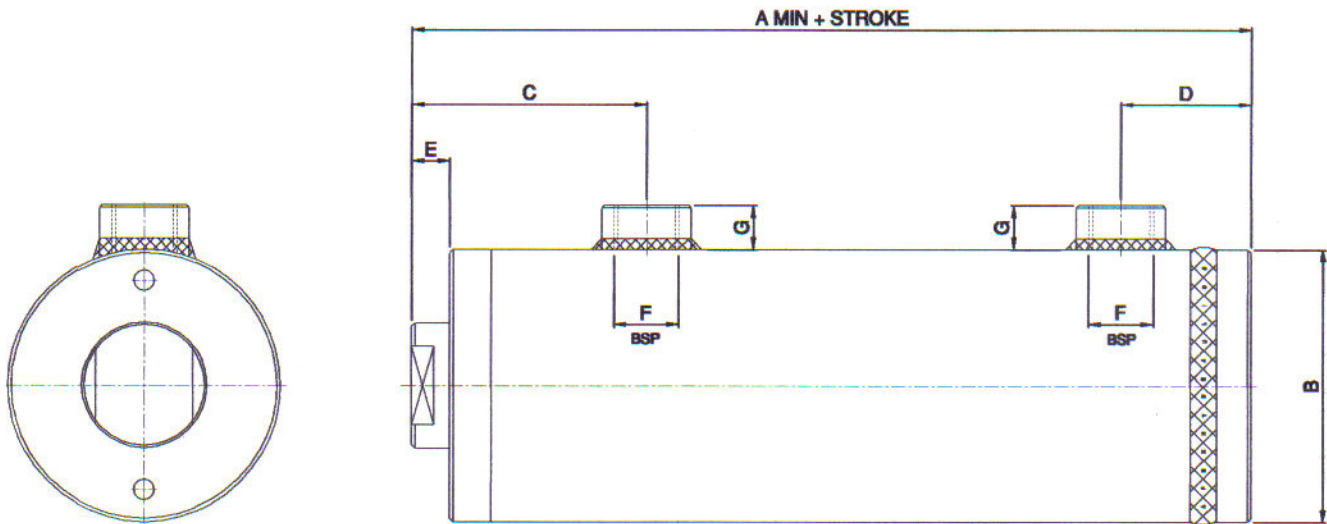


### DIMENSIONS



BORE	PISTON ROD			A	B	C	D	E	F BSP		G	
30	16	-	-	96	40	43	20	10	1/4"	-	16	-
40	20	22	25	130	50	50	26	10	1/4"	-	16	-
50	25	30	-	136	60	53	27	10	3/8"	-	17	-
55	30	35	-	136	65	53	27	10	3/8"	-	17	-
60	30	35	40	166	70	60	32	10	3/8"	-	17	-
63	30	35	40	166	73	60	32	10	3/8"	-	17	-
65	35	40	-	166	75	60	32	10	3/8"	-	17	-
70	30	35	40	166	80	60	32	10	3/8"	-	17	-
75	35	40	40	173	90	70	32	15	1/2"	-	18	-
80	40	45	45	192	95	75	41	15	1/2"	-	18	-
90	40	50	50	203	105	75	41	15	1/2"	-	18	-
100	40	50	60	228	115	97	47	15	1/2"	-	18	-
125	60	70	60	248	145	107	47	15	1/2"	-	18	-
140	70	80	-	261	160	117	52	15	1/2"	3/4"	18	20
150	70	80	-	280	170	123	52	15	1/2"	3/4"	18	20
160	80	90	100	284	180	123	60	15	1/2"	3/4"	18	20
180	100	120	-	292	210	148	60	25	3/4"	1"	20	25
200	100	120	-	332	230	170	70	40	3/4"	1"	20	25
250	120	150	-	390	280	215	70	50	1"	1 1/4"	25	25

All dimensions in mm unless otherwise stated